

nison



Nison Tyre Catalogue - 2018 Edition

nison
Accelerating the Future

www.nison-tyres.com



CONTENTS

PCR / SUV / 4x4

IMPERIUM - Comfort	8
ALONZO - UHP	10
FORTIS - SUV	12

VAN

PORTO - Commercial Van	16
------------------------	----

TBR

NS505	24
NS506	24
NS601	25
NS614	25
NS615	26
NS616	26
NS619	27
NS620	27
NS621	28
NS622	28
NS623	29

TBR

NS716	29
NS717	30
NS718	30
NS719	31

LTR / LCV

NS505 - LTR	34
NS900 - LTR	34
NS901 - LTR	35
NS RIB - LCV	35

OTR & GRADER

NS-KING	38
NS-ROCK II	38
NS-ROCK IV	39
NS-GRADER II	39
NS-GRADER III	40

AGRICULTURE & INDUSTRIAL

NS-AGR1	42
NS-AGR2	42
NS-R4	43
NS-SKS	43

SAND

NS801	46
SAHARA	46

RIMS

RIMS	49
------	----



COMPANY PROFILE

SUN GLOBAL

SUN GLOBAL, headquartered in Dubai, is a global tyre company offering a comprehensive range of quality tyres, rims and tyre solutions. Sun Global is a subsidiary of the SUN GROUP of Companies which has roots in manufacturing, and the automotive tyre industry dating back to 1971. The Group has vast experience and expertise in tyre research & development, production, marketing and tyre management.

Sun Global has its own presence in China, Ghana, Hong Kong, Nigeria, and the U.A.E. with a fast growing customer base that spans across four continents. With a capacity of over four million tyres per year, the Company offers a comprehensive range of tyres with a wide array of patterns in both Bias and Radial under its private brands; NISON, SUNTRAC and RIDAN. The range gives full coverage through all product categories including Passenger Car, Van, Light and Heavy Commercial Truck & Bus, Off-the-Road and Industrial tyres and also includes rims and batteries.

SUNTRAC
INTERNATIONAL LTD

QINGDAO SUNTRAC INTERNATIONAL LIMITED is an experienced professional contract tyre manufacturer, based in the Laoshan District of Qingdao. The Company is part of the Sun Group of Companies, which has roots in tyre research & development, production, sales and marketing and the automotive tyre industry for almost five decades!

The Company offers the full range of Passenger Car, Light Truck, Heavy Truck & Bus and Off-the-Road Tyres in our private brands: SUNTRAC, RIDAN & NISON. With a capacity of over 4 million tyres per year across all tyre categories, our brands are sold in three continents across different terrains.





- > **QUALITY PRODUCTS**
- > **MARKET EXCLUSIVITY**
- > **COMPREHENSIVE PRODUCT RANGE**

- > **PROFESSIONAL CUSTOMER SERVICE**
- > **A CUSTOMER FOCUSED APPROACH**

SERVICE PROMISE

Sun Global and Suntrac International Limited is committed to helping our partners expand their markets by providing :

QUALITY PRODUCTS

Sun Global and Suntrac International Limited products are produced to the highest standards and are the result of complex R&D, design and production investments that come with a quality certified warranty

- On-time delivery
- Logistics service enabling tracking of order from point of dispatch up to point of final delivery
- Marketing tools, promotional materials, customized marketing solutions and brand management
- Product warranty support

MARKET EXCLUSIVITY

A strict policy of one exclusive territorial agent ensures the long-term strategy of the brand is maintained as well as maximum control and profits for our partners

A CUSTOMER FOCUSED APPROACH

Sun Global and Suntrac International Limited sales team make frequent customer visits so as to better understand the market & thereby serve customers better. The Company also holds frequent training seminars

COMPREHENSIVE PRODUCT RANGE

Sun Global and Suntrac International Limited offers a wide array of patterns across different applications and categories to meet the requirements of all customers

PROFESSIONAL CUSTOMER SERVICE

Sun Global and Suntrac International Limited provides a comprehensive, dedicated and timely professional service to our customers offering



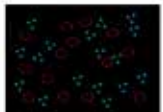




PCR / SUV / 4x4

IMPERIUM - Comfort	8
ALONZO - UHP	10
FORTIS - SUV	12

COMFORT IMPERIUM

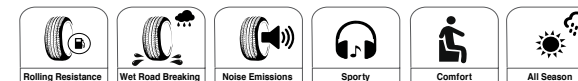


FEATURES:

- 1 FOUR WIDE CIRCUMFERENTIAL GROOVES**
Improves wet grip on rainy days. Compound formula contains high percentage of SILICA to enhance grip on wet surface
- 2 UNIQUE PATTERN DESIGN**
Computer aided variable pitch tread design reduces noise to provide comfortable and quiet ride for all season

- 3 High performance of SILICA reinforces tread pattern, enhances grip on wet surface and lowers the Rolling Resistance**
- 4 Tread design on shoulder lowers the screeching noise while cornering**

nison IMPERIUM - COMFORT



FEATURES:

- Special tread compound providing excellent grip on wet and dry roads and wear resistance.
- Four wide circumferential tread grooves provide excellent performance on wet roads.
- Continuous solid center rib improves directional stability and comfortable ride. Prevents irregular wear.
- Improved tread groove and bead profile design for better ride stability, endurance and handling performance.
- Optimized variable pitch tread design for comfortable quiet ride.
- Tread blocks connected by rib-in-chain to enhance steering stability, decreased block deformation and reduce energy loss.



UTQG 400AA

Series	Size	Ply Rating / Load Index	Speed Rating	Standard Rim	Section Width	Overall Diameter	Tread Depth	Max. Load	Max. Pressure
					mm	mm	mm	Kg	Kpa
13	155/65R13	73	T	4.50B	157	532	7.6	365	300
	155/70R13	75	T	4.50B	157	548	7.6	387	300
	155/80R13	79	T	4.50B	157	578	7.6	437	300
	165/65R13	77	T	5.00B	170	544	7.8	412	300
	175/70R13	82	T	5.00B	177	576	7.8	475	300
	185/70R13	86	H	5.50B	189	590	7.8	530	300
14	175/65R14	82	H/T	5J	177	584	7.8	475	300
	175/70R14	84	T	5J	177	602	7.8	500	300
	185/65R14	86	H	5 1/2J	189	596	7.8	530	300
	185/70R14	88	H	5 1/2J	189	616	7.8	560	300
	195/70R14	91	H	6J	201	630	7.8	615	300
15	185/65R15	88	H	5 1/2J	189	621	7.8	560	300
	195/60R15	88	V	6J	201	615	7.8	560	300
	195/65R15	91	V	6J	201	635	7.8	615	300
	205/60R15	91	V	6J	209	627	7.8	615	300
	205/65R15	94	V	6J	209	647	7.8	670	300
	215/65R15	96	H	6 1/2J	221	661	7.8	710	300
16	205/55R16	91	V	6 1/2J	214	632	7.8	615	300
	205/60R16	92	V	6J	209	652	7.8	750	300
	215/60R16	95	V	6 1/2J	221	664	7.8	690	300
	215/65R16	98	H	6 1/2J	221	686	7.8	750	300
	225/60R16	98	H	6 1/2J	228	676	7.8	750	300

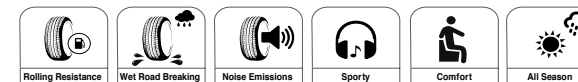
UHP ALONZO



FEATURES:

- 1** Four U shaped groove design provide excellent water drainage performance and gripping power on wet road.
- 2** Computer designed perfect shape of ground contact. Provides good wear resistance property and stability.
- 3** Big and open tread blocks on shoulder enhance tire strength and open shoulder grooves prevent aquaplaning with enhanced wet grip performance.
- 4** Highly effective silica compound to provide low rolling resistance to enhance fuel economy.

nison ALONZO - UHP



FEATURES:

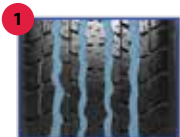
- Four wide circumferential grooves, lateral grooves with fine sipes and continuous block pattern on shoulder provides efficient water evacuation, outstanding wet performance and enhanced stability at high speed cornering.
- Jointless nylon band improves tread stiffness and uniformity and deliver high speed stability.
- Silica tread compound provides better performance on wet surface and reduce rolling resistance.
- Special rib segment design to optimize contact pressure distribution, improve road contact area and provide good control.
- Serrated groove wall absorbs moist and deliver a quieter ride.



UTQG 280AAA

Series	Size	Ply Rating / Load Index	Speed Rating	Standard Rim	Section Width	Overall Diameter	Tread Depth	Max. Load	Max. Pressure
					mm	mm	mm	Kg	Kpa
17	215/45R17	91 XL	W	7J	213	626	7.8	615	340
	215/55R17	98 XL	W	7J	226	668	7.8	750	340
	225/45R17	94 XL	W	7 1/2J	225	634	7.8	670	340
	225/55R17	101 XL	W	7J	233	680	7.8	825	340
	235/55R17	103 XL	W	7 1/2J	245	690	7.8	875	340
18	225/45R18	95 XL	W	7 1/2J	225	659	7.8	690	340
	225/55R18	98	V	7J	233	705	8.5	750	300
	235/45R18	98 XL	W	8J	236	669	7.8	750	340
	235/55R18	100	V	7 1/2J	245	715	8.5	700	300
	235/60R18	107 XL	V	7J	240	739	8.5	975	340
	245/45R18	100 XL	W	8J	243	677	7.8	800	340
	245/60R18	105	V	7J	248	751	8.5	925	300
19	225/45R19	96 XL	W	7 1/2J	225	685	7.8	710	340
	255/50R19	107 XL	V	8J	265	739	8.5	975	340
	255/55R19	111 XL	V	9J	265	763	8.5	1090	340

SUV FORTIS

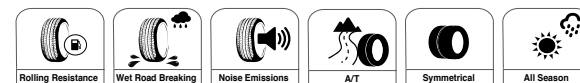


FEATURES:

- 1 Three zigzag grooves contribute to excellent water drainage and traction.
- 2 Wide tread and strong carcass improve the capacity and high speed performance.
- 3 Unique tread compound and construction with improved wear resistance.
- 4 Circumferential tread blocks on shoulders deliver excellent stability and handling.

nison

FORTIS - SUV



FEATURES:

- Special tread compound with wide footprint provides high mileage and excellent braking on wet and dry roads.
- Four circumferential grooves with open wide shoulder blocks to provide excellent wet grip performance and stability.
- Computer aided design to provide excellent road grip, low noise, high speed stability and low rolling resistance.
- Wide and deep design on the shoulder provides better grip as well as heat dissipation.



UTQG 440AA

Series	Size	Ply Rating / Load Index	Speed Rating	Standard Rim	Section Width	Overall Diameter	Tread Depth	Max. Load	Max. Pressure
					mm	mm	mm	Kg	Kpa
15	235/75R15	109 XL	H	6 1/2J	235	733	9.2	1030	340
	31x10.50 R15LT	6PR-109	R	8 1/2J	268	775	12.6	1030	350
16	215/70R16	100	H	6 1/2J	221	708	8.7	800	300
	225/70R16	103	H	6 1/2J	228	722	8.7	875	300
	235/60R16	100	H	7J	240	688	9.2	800	300
	235/70R16	106	H	7J	240	736	9.2	950	300
	245/70R16	111 XL	H	7J	248	750	9.2	1090	340
	265/70R16	112	H	8J	272	778	9.2	1120	300
17	225/60R17	99	H	6 1/2J	228	702	8.7	775	300
	225/65R17	102	H	6 1/2J	228	724	8.7	850	300
	235/65R17	108 XL	H	7J	240	738	9.2	1000	340
	245/65R17	111 XL	H	7J	248	750	9.2	1090	340
	265/65R17	112	H	8J	272	776	9.2	1120	300





nison
Accelerating the Future

VAN

PORTO - Commercial Van

16

COMMERCIAL VAN PORTO





FEATURES:

- Enhanced mileage with special abrasion resistant tread compound.
- Wider foot print and contact pressure distribution optimization providing smooth and comfortable ride.
- Solid shoulder ribs provide responsive handling and even wear.
- Reinforced structure with two steel belts and nylon spiral overlay for strong load bearing capacity and low rolling resistance.



Series	Size	Ply Rating / Load Index	Speed Rating	Standard Rim	Section Width	Overall Diameter	Tread Depth	Max. Load	Max. Pressure
					mm	mm	mm	Kg	Kpa
14	185R14C	8PR-102/100	Q	5 1/2 J	188	650	9	850/800	450
	195R14C	8PR-106/104	Q	5 1/2 J	198	666	9	950/900	450
	205R14C	8PR-109/107	Q	6J	208	686	9	1030/975	450
15	195R15C	8PR-106/104	Q	5 1/2 J	196	693	9	950/900	450
	195/70R15C	8PR-104/102	Q	6J	201	655	9	900/850	450
	225/70R15C	8PR-112/110	Q	6 1/2 J	228	697	9	1120/1060	450
16	185/75R16C	8PR-104/102	Q	5J	184	684	9	900/850	475
	195/65R16C	8PR-104/102	Q	6J	201	660	9	900/850	475
	195/75R16C	8PR-107/105	Q	5 1/2 J	196	698	9	975/925	475
	205/75R16C	8PR-110/108	Q	5 1/2 J	203	714	9	1060/1000	475



- 1 Three zigzag grooves contribute to excellent water drainage and traction.
- 2 Wide tread and strong carcass improve the capacity and high speed performance.
- 3 Unique tread compound and construction with improved wear resistance.
- 4 Circumferential tread blocks on shoulders deliver excellent stability and handling.





nison
Accelerating the Future

TBR

NS505	24
NS506	24
NS601	25
NS614	25
NS615	26
NS616	26
NS619	27
NS620	27
NS621	28
NS622	28
NS623	29
NS716	29
NS717	30
NS718	30
NS719	31

SERVICE

LONG HAUL

REGIONAL

STEER



DRIVE



TRAILER



TBR - PATTERN APPLICATION

REGIONAL

MIXED SERVICE





SIZewise PATTERN RANGE

						
SIZE	NS505	NS506	NS601	NS614	NS615	NS616
8.25R16	✓					
9.00R20	✓					
10.00R20	✓	✓				
11.00R20	✓	✓				
12.00R20	✓					
12.00R24	✓		✓	✓	✓	✓
11R22.5	✓					
12R22.5	✓					
13R22.5	✓					
295/80R22.5						
315/80R22.5	✓				✓	
385/65R22.5						



SIZewise PATTERN RANGE

									
SIZE	NS619	NS620	NS621	NS622	NS623	NS716	NS717	NS718	NS719
8.25R16									
9.00R20									
10.00R20									
11.00R20		✓							✓
12.00R20		✓	✓						
12.00R24									
11R22.5								✓	
12R22.5					✓			✓	
13R22.5									
295/80R22.5								✓	
315/80R22.5	✓			✓				✓	
385/65R22.5						✓	✓		



NS505

- > Combination of rib and lug pattern
- > Suitable for all wheels of truck and bus
- > Suitable for both on-road and off-road applications
- > High abrasion resistance and long mileage life
- > Optimized and reinforced bead design
- > Superior load endurance
- > Superior traction and high speed
- > Low rolling resistance
- > Provides resistance to cutting and tearing
- > Fuel efficient
- > Low heat generation



Size	PR	Tube	Tread Depth	Speed Rating	Standard Rim	Section Width	Overall Diameter	Load Index		Max Load (KG)		Pressure (KPA)		Stuffing qty per
						mm	mm	Single	Dual	Single	Dual	Single	Dual	40HC
8.25R16	16	TT	14	L	6.50H	230	855	128	124	1800	1600	770	770	530
9.00R20	16	TT	15.5	K	7	260	1018	144	142	2800	2650	900	900	310
10.00R20	18	TT	16	K	7.5	276	1049	149	146	3250	3000	930	930	290
11.00R20	18	TT	17	K	8	288	1083	152	149	3550	3250	930	930	260
11R22.5	16	TL	15	M	8.25	273	1047	146	143	3000	2725	830	830	290
12.00R20	18	TT	17.5	K	8.5	315	1125	154	149	3790	3270	840	770	225
12.00R20	20	TT	17.5	K	8.5	310	1119	156	153	4000	3650	900	900	225
12.00R24	20	TT	16	K	8.5	316	1215	160	157	4500	4125	900	900	192
12R22.5	18	TL	16	M	9	292.1	1083	152	149	3550	3250	930	930	240
13R22.5	20	TL	16	L	9.75	315	1120	156	152	3750	3450	830	830	228
315/80R22.5	20	TL	16	L	9	310	1080	156	150	4000	3350	850	830	240

NS506

- > Suitable for highway application
- > Superior driving and braking performance
- > Provides resistance to cutting and tearing
- > Superior compound and design for low heat generation
- > Optimized and reinforced bead design
- > Strong tread for low rolling resistance and high mileage



Size	PR	Tube	Tread Depth	Speed Rating	Standard Rim	Section Width	Overall Diameter	Load Index		Max Load (KG)		Pressure (KPA)		Stuffing qty per
						mm	mm	Single	Dual	Single	Dual	Single	Dual	40HC
10.00R20	18	TT	16	K	7.5	276	1049	149	146	3250	3000	930	930	290
11.00R20	18	TT	16.5	K	8	288	1083	152	149	3550	3250	930	930	260



NS601

- > Suitable for driving wheels
- > Reinforced tread area gives excellent low rolling resistance and higher mileage
- > Unique tread design and tread compound helps in cooler running.
- > Excellent Torque capability for better traction
- > Improved casing profile technology for higher durability



Size	PR	Tube	Tread Depth	Speed Rating	Standard Rim	Section Width		Overall Diameter		Load Index		Max Load (KG)		Pressure (KPA)		Stuffing qty per 40HC
						mm	mm	Single	Dual	Single	Dual	Single	Dual	Single	Dual	
12.00R24	20	TT	16.5	K	8.50	313	1226	160	157	4500	4125	900	900	190		

NS614

- > Suitable for all wheels of truck and bus
- > Improved design for better traction and road grip
- > Optimal for noise reduction
- > Good stone-proof in longitudinal grooves
- > Enhanced mileage performance
- > Outstanding performance in heat dispersion and over-all capacity



Size	PR	Tube	Tread Depth	Speed Rating	Standard Rim	Section Width		Overall Diameter		Load Index		Max Load (KG)		Pressure (KPA)		Stuffing qty per 40HC
						mm	mm	Single	Dual	Single	Dual	Single	Dual	Single	Dual	
12.00R24	20	TT	17	K	8.5	316	1225	160	157	4500	4125	900	900	192		



NS615

- > Suitable for all wheels of truck and bus
- > Improved design for better traction and road grip
- > Optimal for noise reduction
- > Good stone-proof in longitudinal grooves
- > Enhanced mileage performance
- > Outstanding performance in heat dispersion and over-all capacity



Size	PR	Tube	Tread Depth	Speed Rating	Standard Rim	Section Width	Overall Diameter	Load Index		Max Load (KG)		Pressure (KPA)		Stuffing qty per
						mm	mm	Single	Dual	Single	Dual	Single	Dual	40HC
12.00R24	20	TT	16.0	K	8.5	316	1215	160	157	4500	4125	900	900	192
315/80R22.5	20	TL	16.0	L	9.00	310	1080	156	150	4000	3350	850	830	240

NS616

- > Suitable for all wheels of truck and bus
- > Improved design for better traction and road grip
- > Optimal for noise reduction
- > Good stone-proof in longitudinal grooves
- > Enhanced mileage performance
- > Outstanding performance in heat dispersion and over-all capacity



Size	PR	Tube	Tread Depth	Speed Rating	Standard Rim	Section Width	Overall Diameter	Load Index		Max Load (KG)		Pressure (KPA)		Stuffing qty per
						mm	mm	Single	Dual	Single	Dual	Single	Dual	40HC
12.00R24	20	TT	16.0	K	8.5	316	1215	160	157	4500	4125	900	900	192



NS619

- > Suitable for driving wheels
- > Reinforced tread area gives excellent low rolling resistance and higher mileage
- > Unique tread design and tread compound helps in cooler running.
- > Excellent Torque capability for better traction
- > Improved casing profile technology for higher durability



Size	PR	Tube	Tread Depth	Speed Rating	Standard Rim	Section Width	Overall Diameter	Load Index		Max Load (KG)		Pressure (KPA)		Stuffing qty per
						mm	mm	Single	Dual	Single	Dual	Single	Dual	40HC
315/80R22.5	20	TL	19.5	L	9.00	310	1087	156	150	4000	3350	850	850	240

NS620

- > Suitable for rough road conditions such as mountainous region and common level highway.
- > Excellent performance with superior adhesion and strong bearing capacity
- > Superior compound and construction giving excellent tearing and puncture resistance
- > Longer service life with better cutting and tread chunking resistance.



Size	PR	Tube	Tread Depth	Speed Rating	Standard Rim	Section Width	Overall Diameter	Load Index		Max Load (KG)		Pressure (KPA)		Stuffing qty per
						mm	mm	Single	Dual	Single	Dual	Single	Dual	40HC
11.00R20	18	TT	23.5	K	8	288	1085	152	149	3550	3250	930	930	260
12.00R20	18	TT	17.5	K	8.5	315	1125	154	149	3790	3270	840	770	225
12.00R20	20	TT	24.5	K	8.5	310	1131	156	153	4000	3650	900	900	225



NS621

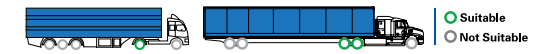
- > Large block pattern
- > Suitable for drive and trailer position of dump truck and concrete mixer
- > Suitable for regional roads, unpaved roads as well as construction and mining sites
- > Special tread compound for better resistance to chipping and cutting
- > Maximizes traction in uneven and/or muddy terrain
- > Reinforced bead and casing for better load capacity and multiple retread



Size	PR	Tube	Tread Depth	Speed Rating	Standard Rim	Section Width	Overall Diameter	Load Index		Max Load (KG)		Pressure (KPA)		Stuffing qty per
						mm	mm	Single	Dual	Single	Dual	Single	Dual	40HC
12.00R20	18	TT	21.5	K	8.5	315	1125	154	149	3790	3270	840	770	225
12.00R20	20	TT	21.5	K	8.5	310	1128	156	153	4000	3650	900	900	225

NS622

- > Block pattern with five deep grooves designed for drive wheel on highways
- > Tiny kerfs on the blocks assure a firm grip and powerful traction
- > Blocks are complicatedly collated for good water evacuation
- > Other benefits include better stability and breaking performance
- > High load and high speed



Size	PR	Tube	Tread Depth	Speed Rating	Standard Rim	Section Width	Overall Diameter	Load Index		Max Load (KG)		Pressure (KPA)		Stuffing qty per
						mm	mm	Single	Dual	Single	Dual	Single	Dual	40HC
315/80R22.5	20	TL	19.5	L	9.00	310	1087	156	150	4000	3350	850	850	240



NS623

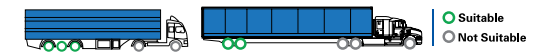
- > Suitable for driving wheels
- > Reinforced tread area gives excellent low rolling resistance and higher mileage
- > Unique tread design and tread compound helps in cooler running.
- > Excellent Torque capability for better traction
- > Improved casing profile technology for higher durability



Size	PR	Tube	Tread Depth	Speed Rating	Standard Rim	Section Width	Overall Diameter	Load Index		Max Load (KG)		Pressure (KPA)		Stuffing qty per
						mm	mm	Single	Dual	Single	Dual	Single	Dual	40HC
12R22.5	18	TL	19	M	9.00	292.1	1089	152	149	3550	3250	930	930	240

NS716

- > Suitable for trailer position of truck travelling mid to long distance
- > Long mileage life leading to enhanced mileage performance
- > High speed driving with lower noise
- > Optimized and reinforced bead design
- > Low heat build-up
- > Enhanced grip ability
- > Irregular abrasion resistance
- > Excellent anti-sidewall scuffing performance
- > Good air retaining and endurance performance



Size	PR	Tube	Tread Depth	Speed Rating	Standard Rim	Section Width	Overall Diameter	Load Index		Max Load (KG)		Pressure (KPA)		Stuffing qty per
						mm	mm	Single	Dual	Single	Dual	Single	Dual	40HC
385/65R22.5	20	TL	16.0	K	11.75	384	1070	160	-	4500	-	900	-	192



NS717

- > Suitable for trailer position of truck travelling mid to long distance
- > Long mileage life leading to enhanced mileage performance
- > High speed driving with lower noise
- > Optimized and reinforced bead design
- > Low heat build-up
- > Enhanced grip ability
- > Irregular abrasion resistance
- > Excellent anti-sidewall scuffing performance
- > Good air retaining and endurance performance



Size	PR	Tube	Tread Depth	Speed Rating	Standard Rim	Section Width		Overall Diameter		Load Index		Max Load (KG)		Pressure (KPA)		Stuffing qty per 40HC
						mm	mm	Single	Dual	Single	Dual	Single	Dual	Single	Dual	
385/65R22.5	20	TL	16.0	K	11.75	384	1070	160	-	4500	-	900	-	192		

NS718

- > Modern pattern designed for all position service
- > Suitable for all wheels of truck and bus
- > Straight rib pattern
- > Excellent high speed performance
- > Enhanced maneuverability
- > Low heat build-up and high mileage performance
- > Low rolling resistance and excellent wet grip performance



Size	PR	Tube	Tread Depth	Speed Rating	Standard Rim	Section Width		Overall Diameter		Load Index		Max Load (KG)		Pressure (KPA)		Stuffing qty per 40HC
						mm	mm	Single	Dual	Single	Dual	Single	Dual			
11R22.5	16	TL	15.0	M	8.25	273	1048	146	143	3000	2725	830	830	290		
12R22.5	18	TL	15.5	M	9.00	292.1	1081	152	149	3550	3250	930	930	240		
295/80R22.5	18	TL	15	M	9	292	1041	152	149	3550	3250	900	900	260		
315/80R22.5	20	TL	15.0	L	9.00	310	1078	156	150	4000	3350	850	850	240		



NS719

- > Reinforced bead and tire casing for better on road performance
- > Computer designed tread pattern especially designed to improve traction, road grip and water drainage
- > Unique tread compound for better wear resistance and low heat built up
- > Low rolling resistance with improved mileage
- > Suitable for all position application, especially for steer and trailer wheel



Size	PR	Tube	Tread Depth	Speed Rating	Standard Rim	Section Width	Overall Diameter	Load Index		Max Load (KG)		Pressure (KPA)		Stuffing qty per
						mm	mm	Single	Dual	Single	Dual	Single	Dual	40HC
11.00R20	18	TT	16.5	K	8	288	1083	152	149	3550	3250	930	930	260

nison

Accelerating the Future

www.nison-tyres.com



nisson

FUSO

Eco-Model



LTR / LCV

NS505 -	LTR	34
NS900 -	LTR	34
NS901 -	LTR	35
NSRIB -	LCV	35



NS505

ALL STEEL

- > Combination of rib and lug pattern
- > Suitable for all wheels of truck and bus
- > Suitable for both on-road and off-road applications
- > High abrasion resistance and long mileage life
- > Optimized and reinforced bead design
- > Superior load endurance
- > Superior traction and high speed
- > Low rolling resistance
- > Provides resistance to cutting and tearing
- > Fuel efficient
- > Low heat generation



Size	PR	Tube	Tread Depth	Speed Rating	Standard Rim	Section Width	Overall Diameter	Load Index		Max Load (KG)		Pressure (KPA)		Stuffing qty per
						mm	mm	Single	Dual	Single	Dual	Single	Dual	40HC
7.50R16	14	TT	12.0	L	6.00G	215	805	122	118	1495	1310	740	740	650
7.50R16	16	TT	12.0	L	6.00G	215	805	122	118	1495	1310	740	740	650
8.25R16	14	TT	15.0	M	6.50H	235	855	126	122	1705	1500	670	670	530
8.25R16	16	TT	15.0	M	6.50H	235	855	128	124	1800	1600	770	770	530

NS900

SEMI-STEEL

- > Excellent traction and braking performance
- > Long service mileage and less fuel consumption
- > Excellent cornering performance
- > Good prevention of irregular wear



Size	PR	Tube	Tread Depth	Speed Rating	Standard Rim	Section Width	Overall Diameter	Load Index		Max Load (KG)		Pressure (KPA)		Stuffing qty per
						mm	mm	Single	Dual	Single	Dual	Single	Dual	40HC
7.00R16LT	10	TL	11.5	L	5.50F	200	775	111	107	1090	975	560	560	940
7.00R16LT	10	TT	11.5	L	5.50F	200	775	111	107	1090	975	560	560	940
7.00R16LT	12	TL	11.5	L	5.50F	200	775	115	110	1215	1060	670	670	940
7.00R16LT	12	TT	11.5	L	5.50F	200	775	115	110	1215	1060	670	670	940



NS901 SEMI-STEEL

- > Excellent traction and braking performance
- > Long service mileage and less fuel consumption
- > Excellent cornering performance
- > Good prevention of irregular wear



Size	PR	Tube	Tread Depth	Speed Rating	Standard Rim	Section Width	Overall Diameter	Load Index		Max Load (KG)	Pressure (KPA)	Stuffing qty per
						mm	mm	Single	Dual			40HC
6.50R16	10	TT	9.2	N	5.50F	185	750	107	102	900	450(65)	900
7.00R16	12	TT	9.5	N	5.50F	200	775	115	110	1120	515(74)	800
7.50R16	14	TT	10.3	L	6.00G	215	805	122	118	1315	740(107)	700

NS RIB BIAS/NYLON

- > Improved air ventilated shoulder rib
- > Robust casing
- > Sinusoidal rib pattern
- > Cooler running at high speed
- > Excellent road grip
- > Good retreadability
- > Uniform tread wear



Size	PR	Rim Width	Overall Diameter	Section Width	Read Arc Width	Non-Skid Depths	Stuffing qty per
		Inch	mm	mm	mm	mm	40HC
6.50-14	8	4.5	700	184	127	10.3	1200
6.50-16	8	4.5	768	190	132	10.6	910
7.00-15	12	5.5/5.0	765	204	152	11.8	825
7.00-16	12	5.5/6.0	784	202	151	11.8	750
7.50-16	16	6.5/6.5	812	215	166	11.6	700
7.50-20	12	6.0/5.5	942	216	160	13.0	450





OTR & GRADER

NS-KING	38
NS-ROCK II	38
NS-ROCK IV	39
NS-GRADER II	39
NS-GRADER III	40



NS-KING

BIAS

The NISON NS-KING E3/L3 Bias tyre are designed for earthmovers applications at lower speeds, for static loads and for industrial applications.

Its non-directional tread pattern design supplies the excellent traction, land grip and chunking resistance performance.



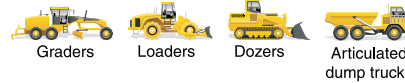
Size	TRA Code	Star Rating	Type	Standard Rim	Tread Depth	New Tyre Inflated Dimensions		Max Load (kg)		Max Pressure(kpa)		Stuffing	
						Section Width	Overall Diameter	10km/h	50km/h	10km/h	50km/h		qty/40HC
						mm	mm						
15.5-25	E3/L3	20PR	TT/TL	12.00/1.3	26.0	395	1275	6800	4375	460	425	140	
17.5-25	E3/L3	20PR	TT/TL	14.00/1.5	28.0	445	1350	8250	5000	575	400	92	
17.5-25	E3/L3	24PR	TT/TL	14.00/1.5	28.0	445	1350	10050	5600	650	460	92	
20.5-25	E3/L3	20PR	TT/TL	17.00/2.0	30.0	520	1490	8835	6000	420	420	72	
20.5-25	E3/L3	24PR	TT/TL	17.00/2.0	30.0	520	1490	9500	6700	450	450	72	
23.5-25	E3/L3	20PR	TT/TL	19.50/2.5	34.0	595	1615	10900	7300	375	300	51	
23.5-25	E3/L3	24PR	TT/TL	19.50/2.5	34.0	595	1615	12500	8000	475	350	51	
26.5-25	E3/L3	28PR	TT/TL	22.00/3.0	38.0	675	1750	15500	10000	475	350	35	
26.5-25	E3/L3	32PR	TT/TL	22.00/3.0	38.0	675	1750	16275	11200	550	367	35	
29.5-25	E3/L3	28PR	TT/TL	25.00/3.6	40.0	750	1875	17300	11500	425	325	26	
29.5-25	E3/L3	32PR	TT/TL	25.00/3.6	40.0	750	1875	17900	11500	435	332	26	

NS-ROCK II

BIAS

The NISON NS-ROCK II E3/L3 Bias tyre are designed for earthmovers applications at lower speeds, for static loads and for industrial applications.

Its non-directional tread pattern design supplies the excellent traction, land grip and chunking resistance performance.



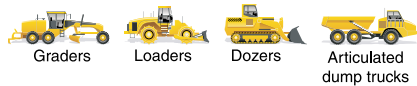
Size	TRA Code	Star Rating	Type	Standard Rim	Tread Depth	New Tyre Inflated Dimensions		Max Load (kg)		Max Pressure(kpa)		Stuffing	
						Section Width	Overall Diameter	10km/h	50km/h	10km/h	50km/h		qty/40HC
						mm	mm						
15.5-25	E3/L3	20PR	TT/TL	12.00/1.3	24.5	395	1275	6750	3850	525	325	110	
17.5-25	E3/L3	20PR	TT/TL	14.00/1.5	26.0	445	1350	8250	5000	575	400	104	
17.5-25	E3/L3	24PR	TT/TL	14.00/1.5	26.0	445	1350	8250	5000	575	400	104	
20.5-25	E3/L3	20PR	TT/TL	17.00/2.0	30.0	520	1490	9500	6000	450	300	74	
20.5-25	E3/L3	24PR	TT/TL	17.00/2.0	30.0	520	1490	9500	6000	450	300	74	
23.5-25	E3/L3	20PR	TT/TL	19.50/2.5	32.0	595	1615	10900	7300	375	300	50	
23.5-25	E3/L3	24PR	TT/TL	19.50/2.5	32.0	595	1615	10900	7300	375	300	50	
26.5-25	E3/L3	28PR	TT/TL	22.00/3.0	36.0	675	1798	14000	9250	400	625	35	
26.5-25	E3/L3	32PR	TT/TL	22.00/3.0	36.0	675	1798	14000	9250	400	625	35	
29.5-25	E3/L3	28PR	TT/TL	25.00/3.5	38.0	750	1875	17500	11500	425	325	27	
29.5-25	E3/L3	32PR	TT/TL	25.00/3.5	38.0	750	1875	17500	11500	425	325	27	

NS-ROCK IV

BIAS

The NISON NS-ROCK IV E3/L3 Bias tyre are designed for earthmovers applications at lower speeds, for static loads and for industrial applications.

Its non-directional tread pattern design supplies the excellent traction, land grip and chunking resistance performance.



Size	TRA Code	Star Rating	Type	Standard Rim	Tread Depth	New Tyre Inflated Dimensions		Max Load (kg)		Max Pressure(kpa)		Stuffing qty/40HC
						Section Width	Overall Diameter	10km/h	50km/h	10km/h	50km/h	
						mm	mm	mm	mm	mm	mm	
15.5-25	E3/L3	20PR	TT/TL	12.00/1.3	24.5	395	1275	6750	3850	525	325	110
17.5-25	E3/L3	20PR	TT/TL	14.00/1.5	26.0	445	1350	8250	5000	575	400	104
17.5-25	E3/L3	24PR	TT/TL	14.00/1.5	26.0	445	1350	8250	5000	575	400	104
20.5-25	E3/L3	20PR	TT/TL	17.00/2.0	30.0	520	1490	9500	6000	450	300	74
20.5-25	E3/L3	24PR	TT/TL	17.00/2.0	30.0	520	1490	9500	6000	450	300	74
23.5-25	E3/L3	20PR	TT/TL	19.50/2.5	32.0	595	1615	10900	7300	375	300	50
23.5-25	E3/L3	24PR	TT/TL	19.50/2.5	32.0	595	1615	10900	7300	375	300	50
26.5-25	E3/L3	28PR	TT/TL	22.00/3.0	36.0	675	1798	14000	9250	400	625	35
26.5-25	E3/L3	32PR	TT/TL	22.00/3.0	36.0	675	1798	14000	9250	400	625	35
29.5-25	E3/L3	28PR	TT/TL	25.00/3.5	38.0	750	1875	17500	11500	425	325	27
29.5-25	E3/L3	32PR	TT/TL	25.00/3.5	38.0	750	1875	17500	11500	425	325	27

NS-GRADER II

The NISON NS-GRADER II G2/L2 Grader tyres are designed for motor grader, loader excavators and bulldozers applications that work on soft muddy ground.

It has a great traction and good self-cleaning wide tread that provides good buoyancy and excellent driving performance in the muddy road.



Size	TRA Code	Star Rating	Type	Standard Rim	Tread Depth	New Tyre Inflated Dimensions		Max Load (kg)			Max Pressure(kpa)			Stuffing qty/40HC
						Section Width	Overall Diameter	10km/h	40km/h	50km/h	10km/h	40km/h	50km/h	
						mm	mm	mm	mm	mm	mm	mm	mm	
15.5-25	G2/L2	12PR	TT/TL	12.00/1.3	26	395	1275	5600	-	3250	400	-	250	140
14.00-24	G2/L2	16PR	TT/TL	8.00TG	28	375	1420	7300	3650	-	550	375	-	120

NS-GRADER III

The NISON NS-GRADER III G2/L2 Grader tyres are designed for motor grader, loader excavators and bulldozers applications that work on soft muddy ground.

It has a great traction and good self-cleaning wide tread that provides good buoyancy and excellent driving performance in the muddy road.



Graders

Size	TRA Code	Star Rating	Type	Standard Rim	Tread Depth	New Tyre Inflated Dimensions		Max Load (kg)		Max Pressure (kpa)		Stuffing Qty
						Section Width	Overall Diameter	10km/h	50km/h	10km/h	50km/h	
					(mm)	(mm)	(mm)					
25-15.5	G2/L2	12	TT/TL	1.3/12.00	23.5	395	1275	5600	3250	400	250	110
25-17.5	G2/L2	16	TT/TL	1.5/14.00	26.5	445	1350	7300	4250	475	300	104
25-20.5	G2/L2	16	TL	2.0/17.00	28.5	521	1493	8250	4000	350	225	64
25-23.5	G2/L2	16	TL	2.5/19.50	31.5	597	1617	9500	4750	300	200	49
24-13.00	G2/L2	12	TT/TL	8.00TG	24.5	333	1278	5600	2725	450	300	150
24-14.00	G2/L2	16	TT/TL	8.00TG	25.5	362	1348	7300	3650	550	350	140





nison
Accelerating the Future

AGRICULTURE & INDUSTRIAL

NS-AGR1	42
NS-AGR2	42
NS-R4	43
NS-SKS	43



NS-AGR1

- > Suitably designed with dual angle self cleaning deep lugs to provide high traction
- > Designed to deliver extra power to the ground
- > Deep tread and strong construction to provide excellent durability
- > Suitable for general farming



NS-AGR2

- > Lugs suitably designed to give better traction
- > Excellent performance and durability under hard working conditions
- > Nylon carcass ensures full power transmission
- > Suitable for general farming



Size	Ply Rating	Tube	Tread Depth	Standard RIM	New Tyre Inflated Dimensions		Max Load	Inflation Pressure	Stuffing
					Section Width	Overall Diameter			
					mm	mm			
14.9-24	10PR	TT	25	W13	378	1265	1990	230	150
14.9-28	10PR	TT	30	W13	378	1365	2120	230	125
16.9-28	10PR	TT	30	W15L	430	1435	2380	200	88
16.9-30	12PR	TT	34	W15L	430	1485	2730	240	80

Size	Ply Rating	Tube	Tread Depth	Standard RIM	New Tyre Inflated Dimensions		Max Load	Inflation Pressure	Stuffing
					Section Width	Overall Diameter			
					mm	mm			
9.5-24	8PR	TT	31	W8	240	1050	1110	280	280
12.4-24	10PR	TT	36	W11	315	1160	1415	230	200



NS-R4

- > Engineered to Ensure good traction
- > Excellent performance on and off the road
- > Ideal for heavy duty service



NS-SKS

- > Open self-cleaning lug profile
- > Specially designed tread pattern for higher torque
- > Deep tread lugs assure maximum tyre life
- > Robust sidewall protects against damages
- > Low heat build up compound for cooler running



Size	Star Rating	TUBE	Tread Depth	Standrad Rim	New Tyre Inflated Dimensions		Max Load	Inflation Pressure	Stuffing Qty
					Section Width	Overall Diameter			
					(mm)	(mm)	10km/h (kg)	qty/40HC (kpa)	qty/40HC
12.5/80-18	12	TL	25	11.00	350	1001	370	282	282
10.5/80-18	10	TL	22	W9	279	875	370	300	300

Size	Ply Rating	Tube	Tread Depth	Section Width	Overall Diameter	Max Load (kg)		Inflation Pressure(k-pa)	Stuffing Qty/40HC
			mm	mm	mm				
10-16.5	10PR	TL	18.0	8.25	261	779	2170	520	560
12-16.5	12PR	TL	18.0	9.75	312	830	2900	550	470





SAND

NS801	46
SAHARA	46



NS801

- > Suitable for vehicle operating on desert, sand ground and loose surface.
- > The combination of wide tread, round shoulder and streamlined pattern design provides stable ride, good floating performance and excellent steering ability on sand ground.



Size	PR	Tube	Tread Depth	Speed Rating	Standard Rim	Section Width	Overall Diameter	Load Index		Max Load (KG)		Pressure (KPA)		Stuffing qty per
						mm	mm	Single	Dual	Single	Dual	Single	Dual	40HC
16.00-20	18	TT	13	-	10.00	388	1330	-	-	4325	-	325	-	140
14.00-20	16	TT	13	-	10.00	332	1215	-	-	4125	-	245	-	180

SAHARA

- > Radial tyre for vehicles operating on sand ground.
- > Provides excellent grip and floatation on sand and loose soil.



Size	PR	Tube	Tread Depth	Speed Rating	Standard Rim	Section Width	Overall Diameter	Load Index		Max Load (KG)		Pressure (KPA)		Stuffing qty per
						mm	mm	Single	Dual	Single	Dual	Single	Dual	40HC
7.50R16LT	8	TL	9.5	R	6.00G	215	805	112	107	1120	975	460	460	720
7.50R16LT	8	TT	9.5	R	6.00G	215	805	112	107	1120	975	460	460	720







RIMS



Size	Holes	Load 1x40HC
22.5x9.00	10	640
22.5x8.25	10	640
22.5x8.25	8	640
22.5x11.75	10	480
8.5-24	10	384
19.5x6.75	6	800
17.5x6.75	6	1000
8.5-20	10	450
8.5-24	10	384

DESIGNATIONS, LOAD INDEX AND SPEED RATING



Load Index

Load Index	KG	LBS	Load Index	KG	LBS	Load Index	KG	LBS
70	335	739	90	600	1323	110	1060	2337
71	345	761	91	615	1356	111	1090	2403
72	355	783	92	630	1389	112	1120	2469
73	365	805	93	650	1433	113	1150	2535
74	375	827	94	670	1477	114	1180	2601
75	387	853	95	690	1521	115	1215	2679
76	400	882	96	710	1565	116	1250	2756
77	412	908	97	730	1609	117	1285	2833
78	425	937	98	750	1653	118	1320	2910
79	437	963	99	775	1709	119	1360	1998
80	450	992	100	800	1764	120	1400	3086
81	462	1019	101	825	1819	121	1450	3197
82	475	1047	102	850	1874	122	1500	3307
83	487	1074	103	875	1929	123	1550	3417
84	500	1102	104	900	1984	124	1600	3527
85	515	1135	105	925	2039	125	1650	3638
86	530	1168	106	950	2094	126	1700	3748
87	545	1202	107	975	2149	127	1750	3858
88	560	1235	108	1000	2205	128	1800	3968
89	580	1279	109	1030	2271	129	1850	4079
						130	1900	4189

Speed Rating

Serial No.	Speed Symbol	Maximum Speed (km/hr)
1	Q	160
2	R	170
3	S	180
4	T	190
5	H	210
6	V	240
7	W	270
8	Y	300
9	ZR	240 & above



Load Index

Load Index	KG	Load Index	KG	Load Index	KG	Load Index	KG
115	1251	131	1950	147	3075	163	4875
116	1250	132	2000	148	3150	164	5000
117	1285	133	2060	149	3250	165	5150
118	1320	134	2120	150	3350	166	5300
119	1360	135	2180	151	3450	167	5450
120	1400	136	2240	152	3550	168	5600
121	1450	137	2300	153	3650	169	5800
122	1500	138	2360	154	3750	170	6000
123	1550	139	2430	155	3875	171	6150
124	1600	140	2500	156	4000	172	6300
125	1650	141	2575	157	4125	173	6500
126	1700	142	2650	158	4250	174	6700
127	1750	143	2725	159	4375	175	6900
128	1800	144	2800	160	4500	176	7100
129	1850	145	2900	161	4625	177	7300
130	1900	146	3000	162	4750		

Speed Rating

Speed Symbol	Maximum Speed (km/hr)
B	50
C	60
D	65
E	70
F	80
G	90
J	100
K	110
L	120
M	130
N	140
P	150
Q	160
R	170

nison
Accelerating the Future

www.nison-tyres.com





nison

SUN GLOBAL
DUBAI, U.A.E.

SUNTRAC
INTERNATIONAL LTD
QINGDAO, CHINA